

Petaluma AIA Sustainable Design Assessment Team (SDAT)

June 2023





An architectural rendering of a sustainable urban street design. The scene features a wide, paved pedestrian walkway with a hexagonal pattern, a green-painted bicycle lane, and a lush green park area with large trees and garden beds. People are shown walking, sitting on benches, and gardening. In the background, there are brick buildings, including one with a large arched window, and a modern building with a glass facade. The sky is bright and sunny.

**AIA Petaluma SDAT
(Sustainable Design
Assessment Team)**

August 05 + 08 2022

AIA

The American Institute of Architects



**AIA
PETALUMA SDAT**

**FOCUS
15-MINUTE
NEIGHBORHOOD
& LIVING STREETS**

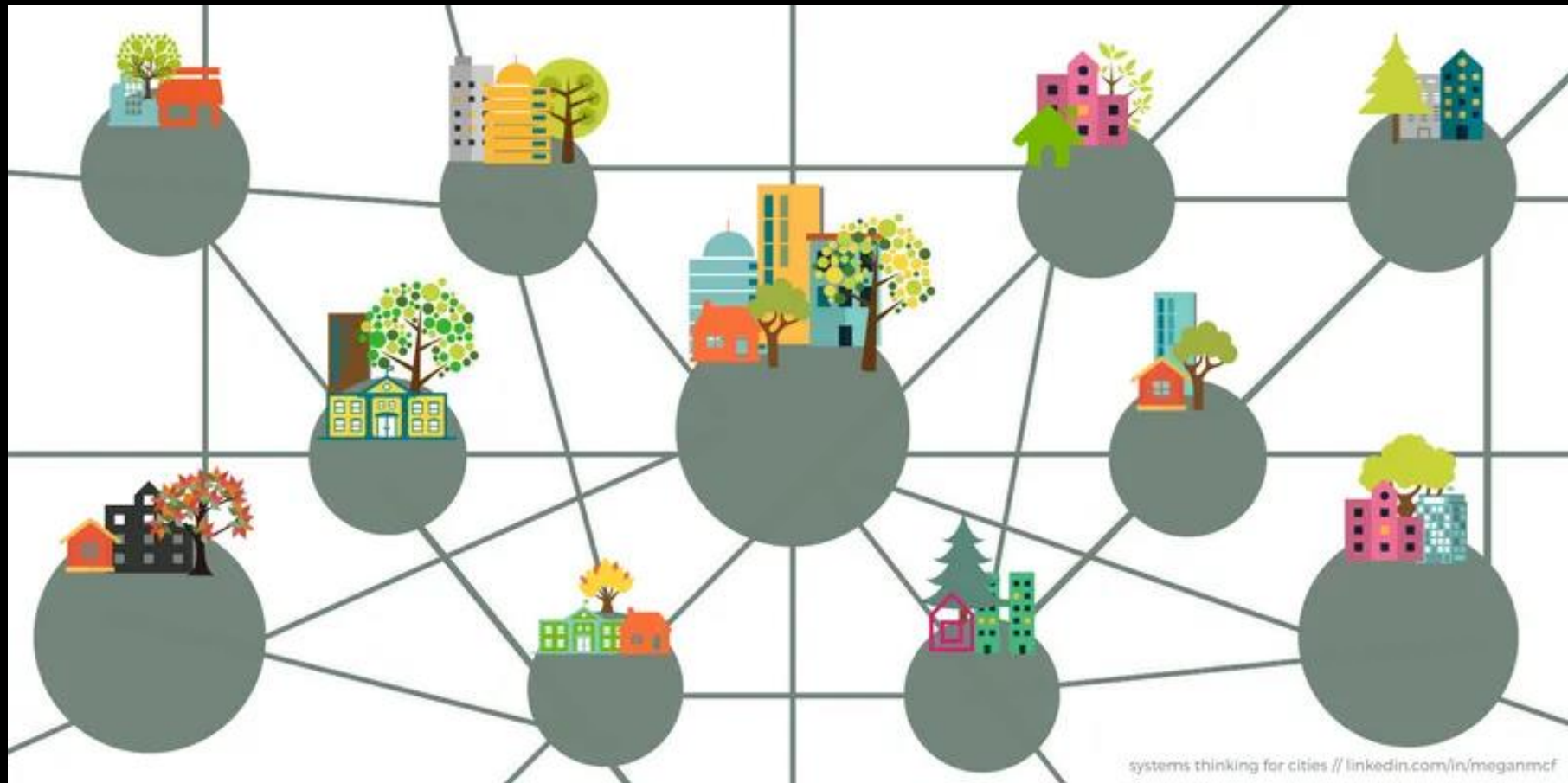


August 5-8, 2022



AIA
Communities
by Design

Reimagining Petaluma



Part 1:

15-Minute Neighborhoods



SERVE

PARADOX
COFFEE

www.paradoxdesign.com

CLOSED

PARADOX

COFFEE

www.netilradio.com



bagel

PARADOX
COFFEE
SOFTSERVE
Ice Cream

PLANTED
Aperol Somb \$5

the

THE LOCAL
GENERAL STORE

1440







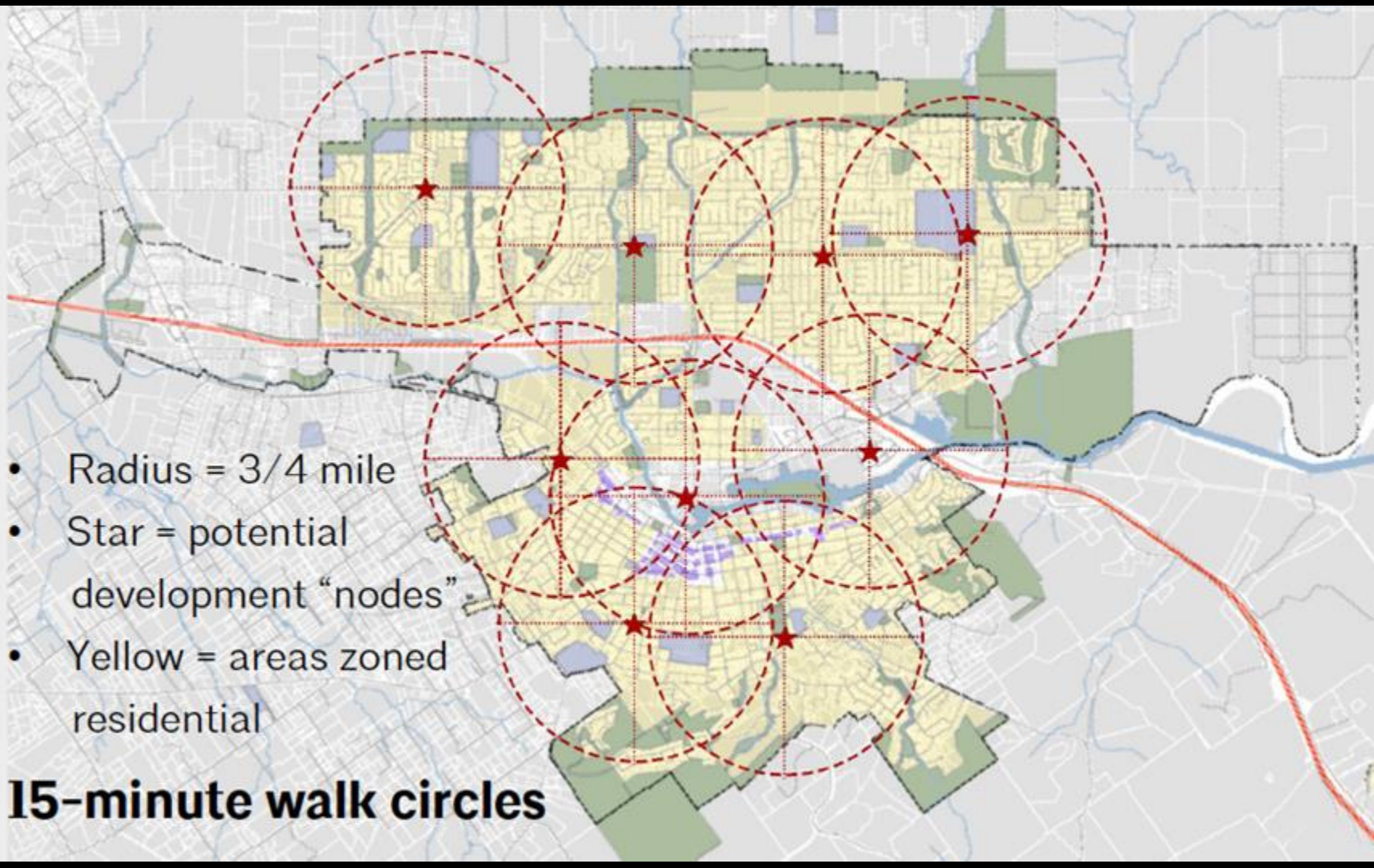
“Lowly, unpurposeful,
and random as they
appear, sidewalk
contacts are the small
change from which a
city's wealth of public
life must grow.”

– *Jane Jacobs*



The image is a map of a city area, likely a suburban or urban neighborhood. A central point is marked with a red star. A dashed red circle is drawn around this star, representing a 15-minute walk circle. The area within the circle is shaded in light purple. The surrounding city area is shaded in light yellow. A red line, possibly a road or a transit line, runs horizontally across the middle of the map. A blue line, possibly a river or a canal, runs vertically through the center of the map. The map shows a grid of streets and various land use patterns, including residential areas and green spaces.

15-minute walk circles

- 
- Radius = 3/4 mile
 - Star = potential development “nodes”
 - Yellow = areas zoned residential

15-minute walk circles







neighborhood
cafe

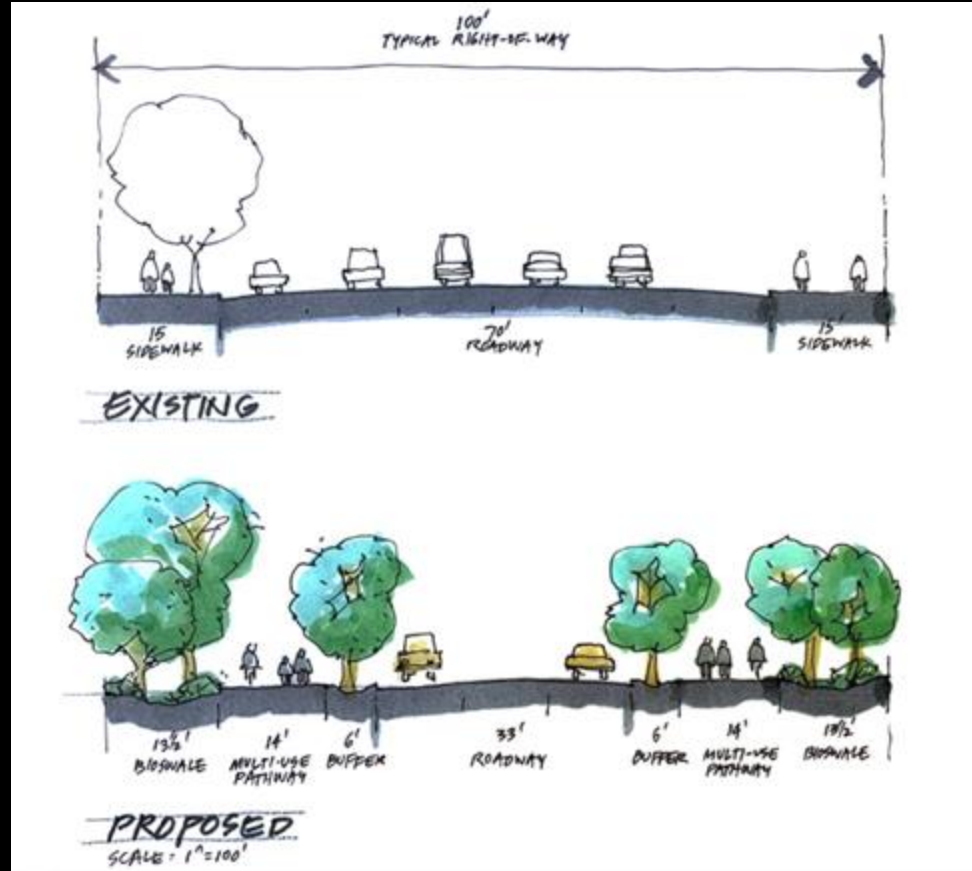
CAFE

Part 2: Transportation, or Reimagining Mobility

The SDAT team heard the community identify five key challenges of our roadway system here in Petaluma:

1. Fragmented bikeway network
2. Limited cross-town connectivity
3. Motorists speeding through neighborhoods
4. Narrow sidewalks
5. Unreliable transit service

“Fix Washington Street” and all of our arterials



Pavements can be permeable for increased flood protection and stormwater management.

Variety of Native Canopy Trees

14' Bike/ Pedestrian Path Connector



3- Lane Road

Bio-retention

Water infiltrates into the ground while native plants provide biodiversity and filter pollutants

Stormwater Management

Curb cuts can allow water from the street to enter bioswales

Green Connectors



Transforming grey corridors into healthy, walkable, bikeable, resource rich diverse corridors



Update Petaluma's Street Design Standards

Include sidepaths and protected bike lanes

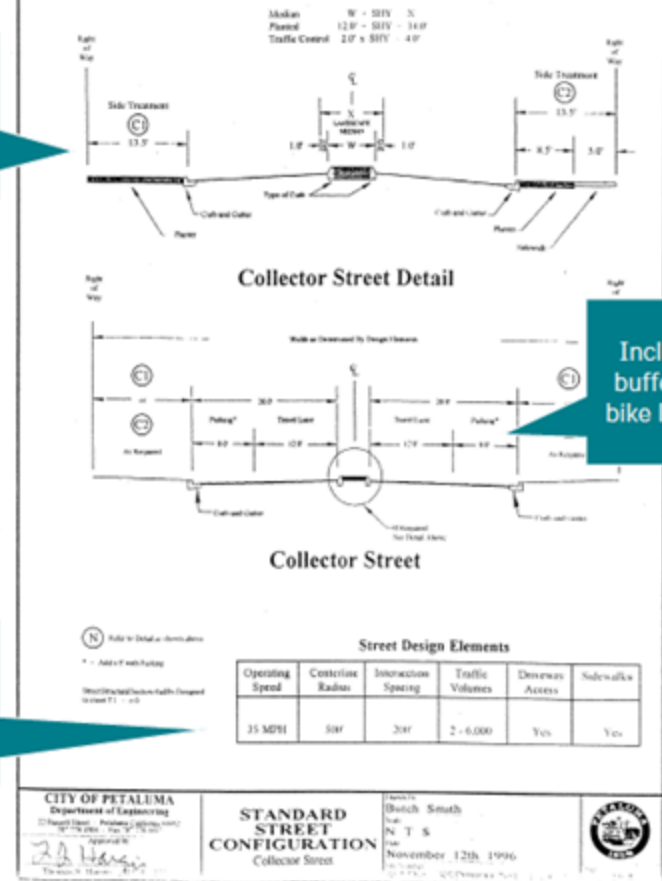
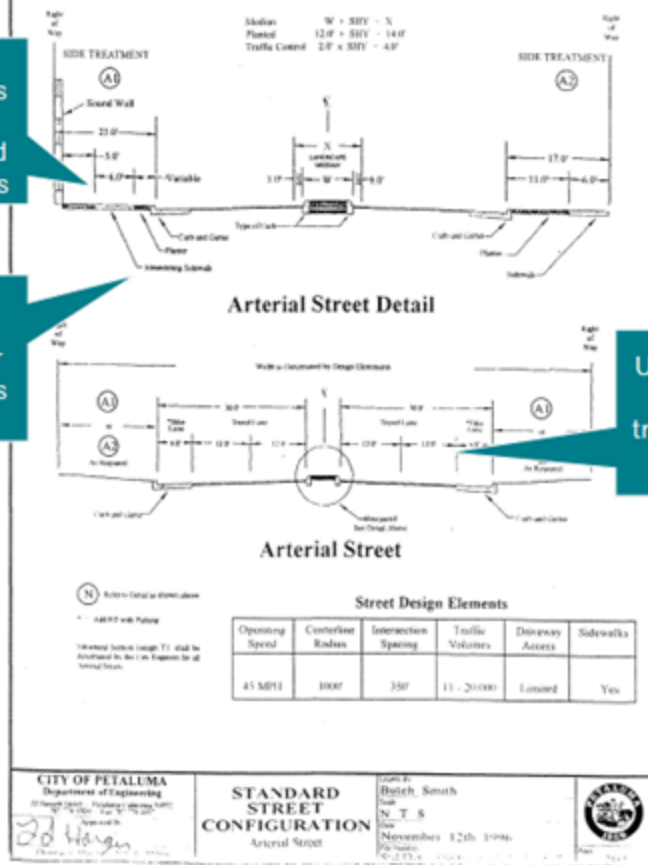
Don't meander sidewalks

Always provide sidewalks on both sides

Use 10' or 11' for travel lane widths

Include buffered bike lanes

Reduce design speeds



Improve transit reliability and frequency
“... in order to encourage all residents and visitors to use transit rather than drive.”



Create a Neighborhood Traffic Calming Program:

“In addition to more traditional traffic calming treatments such as curb extensions and speed humps, the City should explore or continue to explore mini traffic circles, raised crosswalks, chicanes, and one-lane pinch points.”



Summary:

1. Reimagine our streets!
2. Work toward the creation of walkable 15-minute neighborhoods
3. Integrate into our guiding documents



Big thanks to all of our strategic partners and community members:

Strategic partners:

- Aquus Foundation
- City of Petaluma
- Climate Action Petaluma
- Cool Petaluma
- Urban Chat/Know Before You Grow

Community members:

- Ann Edminster
- Annie Stuart
- Cinda Gilliland
- Chris Lynch
- Dan Lyke
- Dave Alden
- D'Lynda Fischer

Community members, cont'd::

- Dave Alden
- Gloria McCallister
- Iliana Madrigal-Hooper
- Jerome Clelend
- Kathy O'Donnell
- Larry Reed
- Mary Dooley
- Natasha Juliana
- Pete Gang
- Veronica Olsen

**15-minute
neighborhoods
& living streets**

questions - comments

